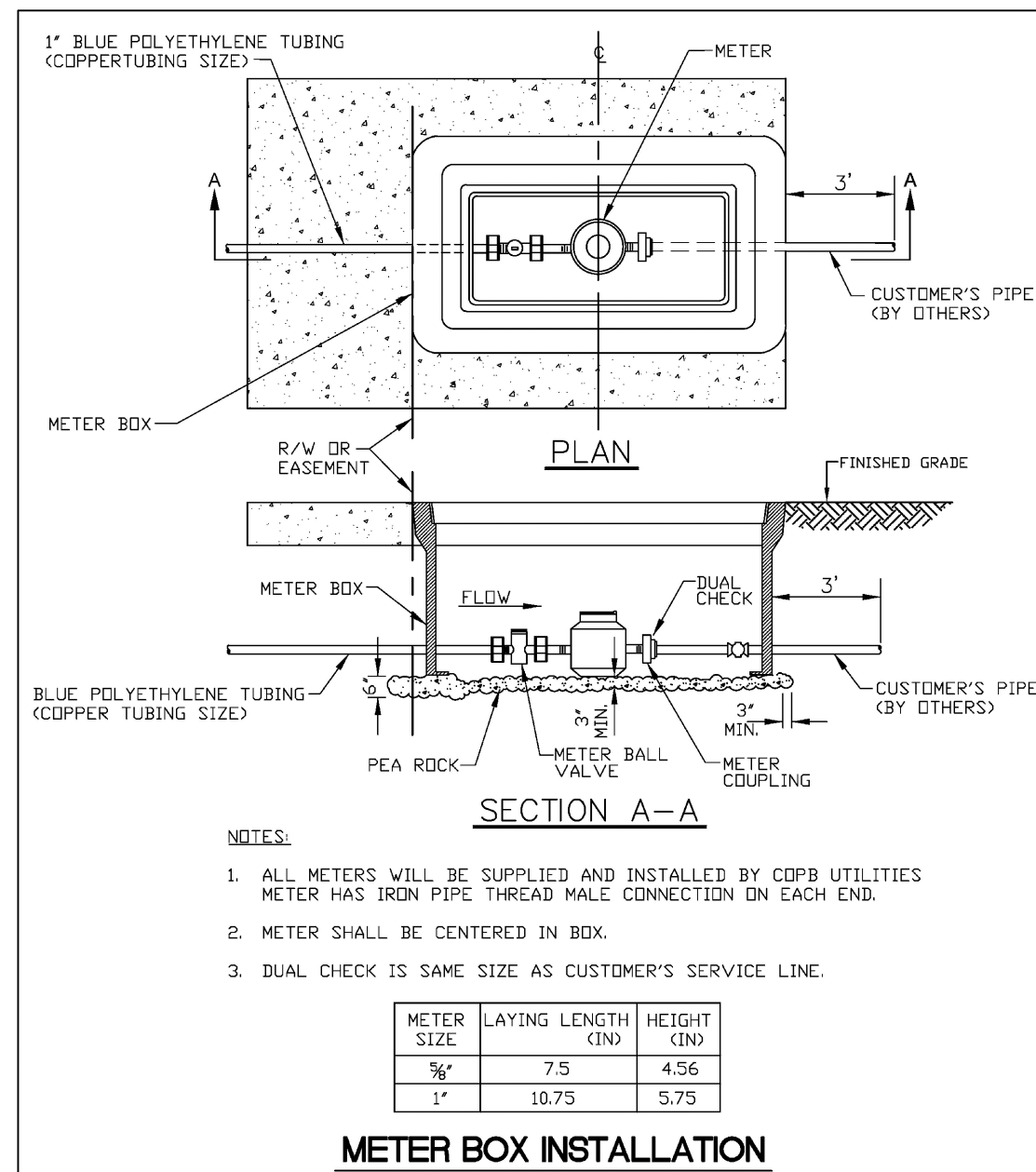
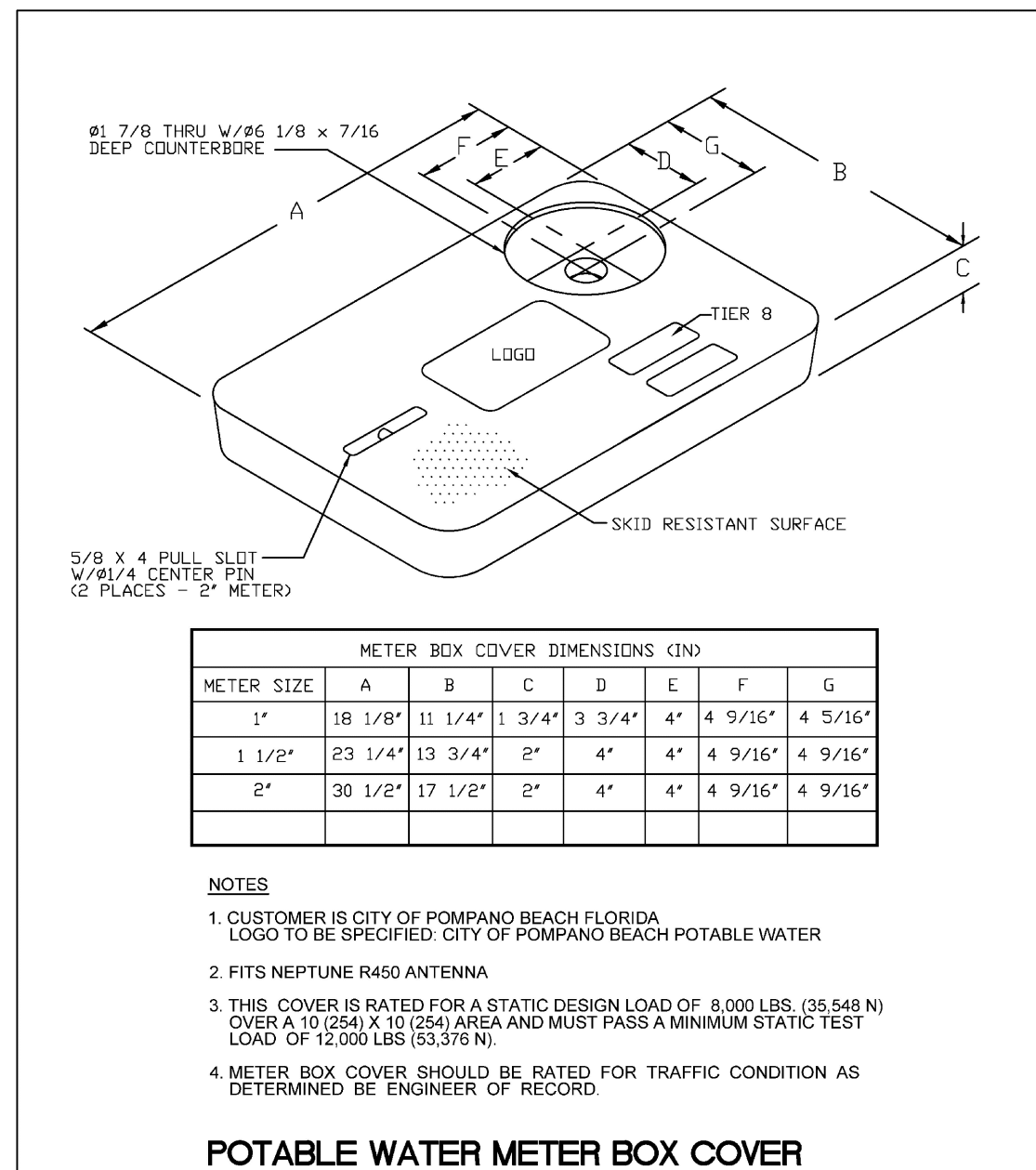


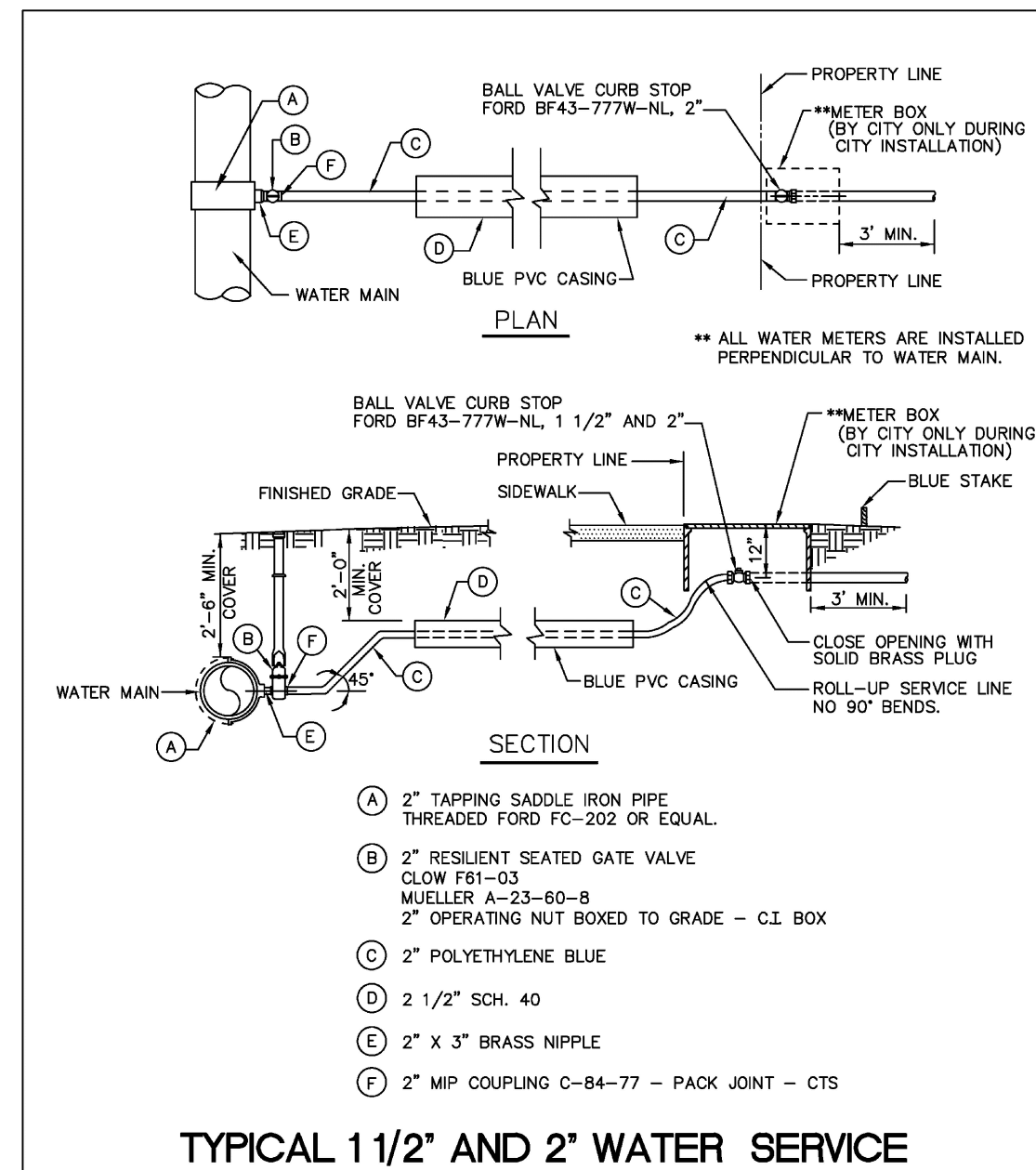
ENGINEERING STANDARDS 2025		
REVISIONS	ENGINEERING DIVISION	MASTER METER AND BACKFLOW DEVICE
BY DATE	CITY OF POMPAÑO BEACH	DATE: MAY 2022
S.S. 09-2011		DWG. NO. 106-2
S.S. 11-2012		
S.S. 12-2013	SCALE: N.T.S.	
S.S. 11-2016		



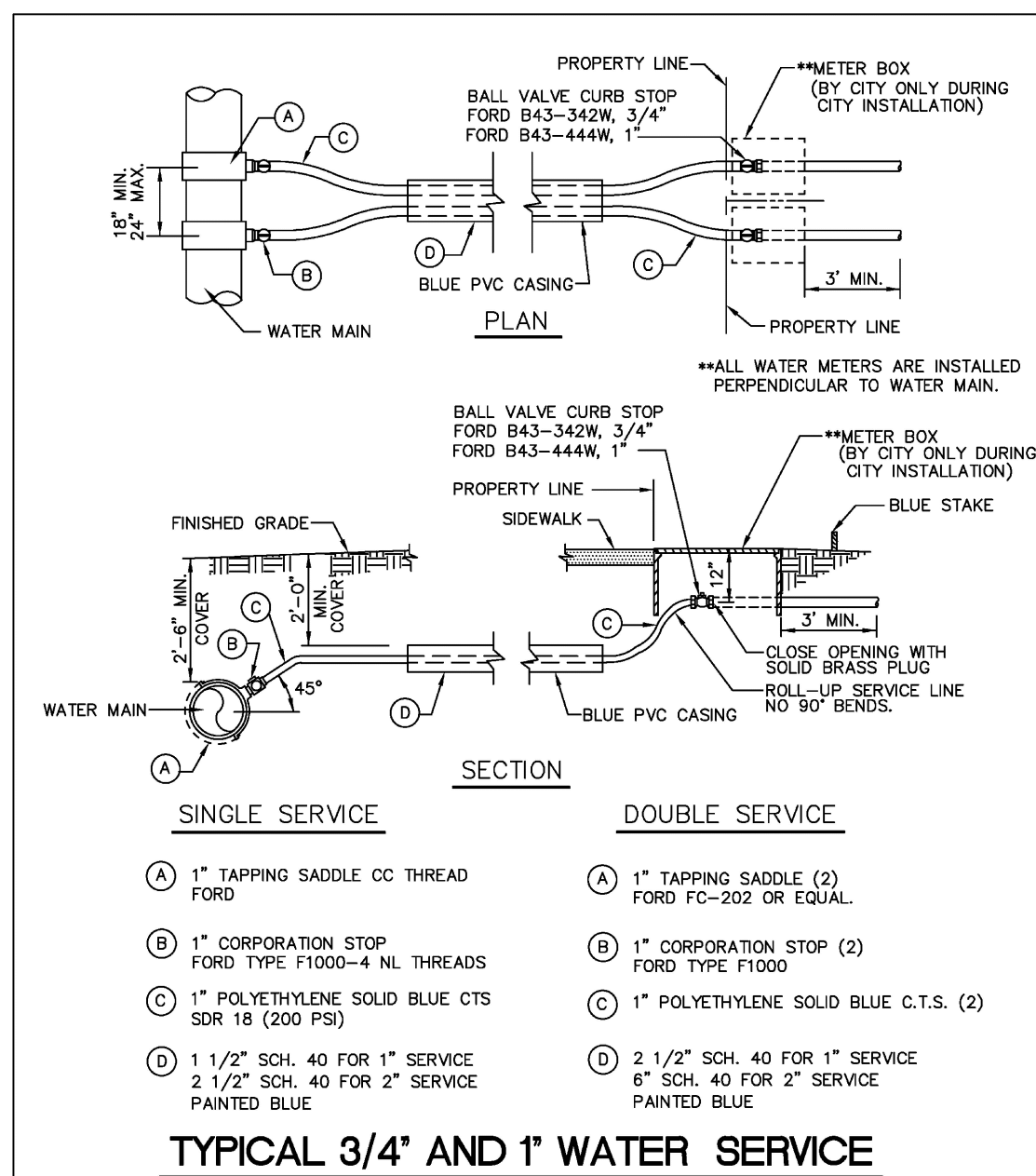
ENGINEERING STANDARDS 2025		
REVISIONS	ENGINEERING DIVISION	METER BOX INSTALLATION FOR 5/8\"/>
BY DATE	CITY OF POMPAÑO BEACH	DATE: JAN. 2022
S.S. 11-2012		DWG. NO. 105-2
	SCALE: N.T.S.	



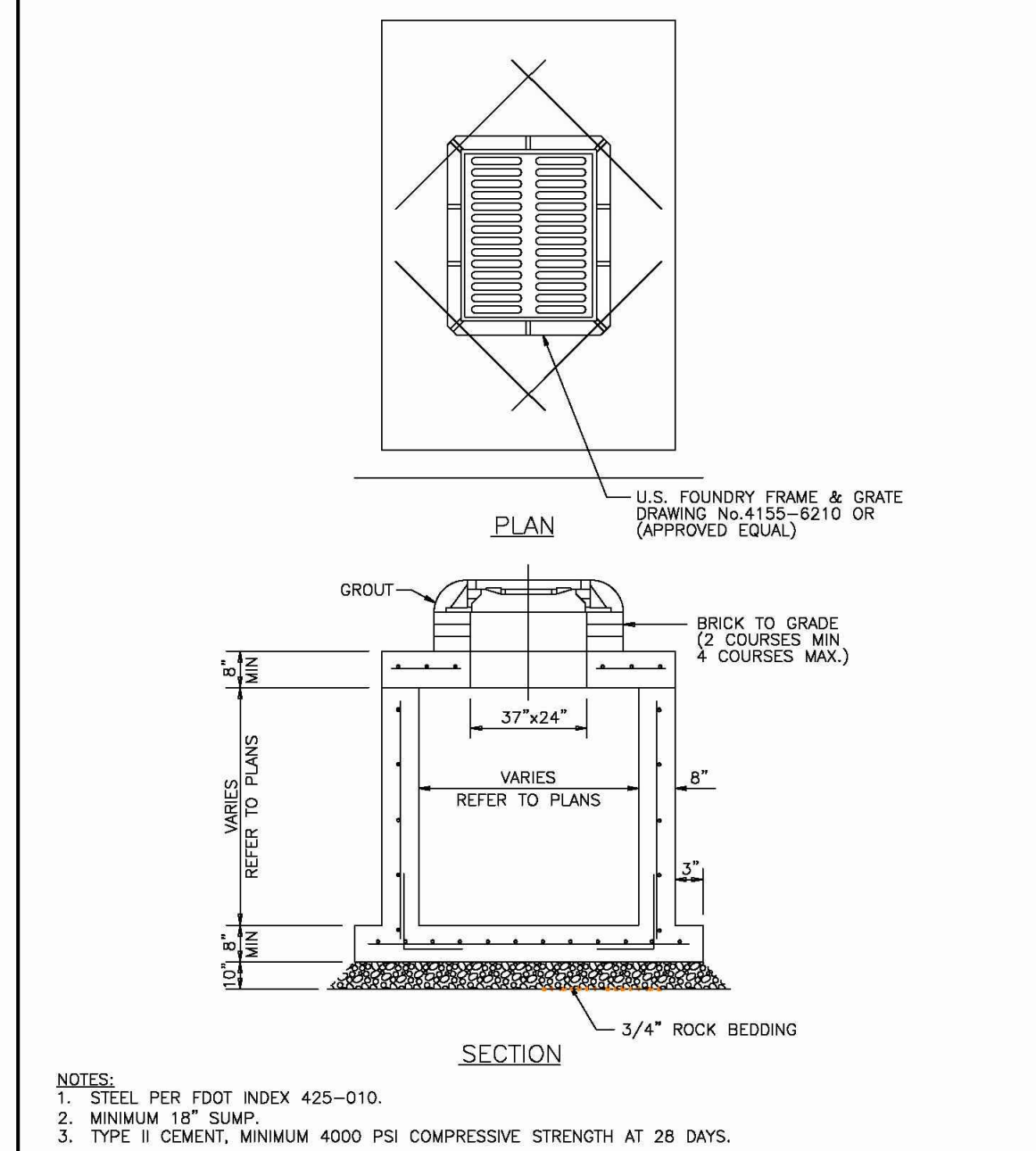
ENGINEERING STANDARDS 2025		
REVISIONS	ENGINEERING DIVISION	TYPICAL METER BOX COVER
BY DATE	CITY OF POMPAÑO BEACH	DATE: JAN. 2022
S.S. 11-2012		DWG. NO. 105-3
	SCALE: N.T.S.	



ENGINEERING STANDARDS 2025		
REVISIONS	ENGINEERING DIVISION	TYPICAL 2\"/>
BY DATE	CITY OF POMPAÑO BEACH	DATE: APRIL 2022
S.S. 09-2011		DWG. NO. 107-2
S.S. 05-2012		
S.S. 11-2018	SCALE: N.T.S.	
A.S. 08-2021		



ENGINEERING STANDARDS 2025		
REVISIONS	ENGINEERING DIVISION	TYPICAL 1\"/>
BY DATE	CITY OF POMPAÑO BEACH	DATE: MAY 2022
T.W. 11-2007		DWG. NO. 107-1
S.S. 09-2012		
S.S. 11-2015	SCALE: N.T.S.	
A.S. 08-2021		



ENGINEERING STANDARDS 2025		
REVISIONS	ENGINEERING DIVISION	PRECAST DRAINAGE STRUCTURE
BY DATE	CITY OF POMPAÑO BEACH	DATE: APRIL 2024
A.S. 04-24		DWG. NO. 400-1A
	SCALE: N.T.S.	

ATTENTION IS DIRECTED TO THE FACT THAT THESE PLANS MAY HAVE BEEN REDUCED IN SIZE BY REPRODUCTION. THIS MUST BE CONSIDERED WHEN OBTAINING SCALED DATA.

Sunshine
Call 811 or www.sunshine811.com two full business days before digging to have utilities located and marked.
Check positive response codes before you dig!

OWNERSHIP AND USE OF THESE DOCUMENTS & SPECIFICATIONS ARE WITHHELD BY SERVICE AND SHALL REMAIN THE PROPERTY OF GLOBE ENGINEERING, INC. WHETHER THE PROJECT HAS OR HAS NOT BEEN COMPLETED OR NOT.
THESE DOCUMENTS, DETAILS, & SPECIFICATIONS SHALL NOT BE USED BY ANYONE, ON ANY OTHER PROJECT OR FOR ANY OTHER USE WITHOUT THE WRITTEN PERMISSION BY GLOBE ENGINEERING, INC.
THIS PLAN MAY NOT BE REPRODUCED WITHOUT WRITTEN PERMISSION FROM GLOBE ENGINEERING, INC.
© 2025 - GLOBE ENGINEERING, INC.

TOWNHOMES

3305 SE 5TH STREET
POMPAÑO BEACH, FL 33062

CITY STANDARD DETAILS

Globe Engineering, Inc.

Civil Engineering - Land Planning - Construction Management

4839 SW 148 Avenue, Suite 507
Fort Lauderdale, FL 33330

Phone: 954-318-7628
www.civil-engineer.us

FBPE REGISTRY No. 8604

THIS ITEM HAS BEEN DIGITALLY SIGNED AND SEALED BY MARTIN PILOTE USING A DIGITAL SIGNATURE AND DATE. PRINTED COPIES OF THIS DOCUMENT ARE NOT CONSIDERED SIGNED AND SEALED AND THE SIGNATURE MUST BE VERIFIED ON ANY ELECTRONIC COPIES. PRINTED COPIES ARE ONLY VALID IF IT INCLUDES AN INK ORIGINAL HAND SIGNATURE.



DESIGNED: MP
DRAWN: SKC
DATE: 12/2/2025

PROJECT NO:
2025-011

DRAWING NAME:
C-PD DETAILS

SHEET NO:
C-7 OF 7